



FAMILY NATURE ACTIVITIES WITH GLENVEAGH NATIONAL PARK

DISCOVER POND INSECTS

HAVE A LOOK IN A POND TO SEE IF YOU CAN FIND ANY OF THESE CREATURES!



WATER HOG LOUSE

Feeds on decaying matter; also known as the water slater. Looks like a leggy woodlouse



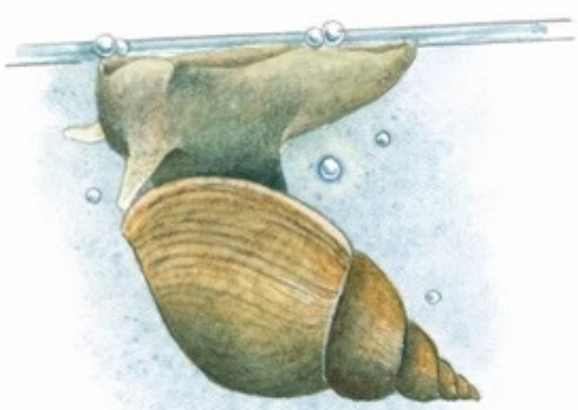
COMMON BLACK DIVING BETLE

Predator. Shiny black body, 10mm long; red antennae and front legs.



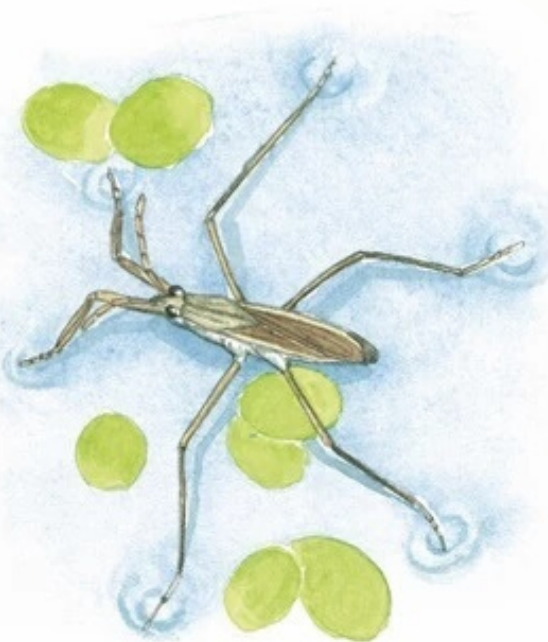
DAMSELFLY NYMPH

Predator. Slender body, about 20mm long; three long flattened 'tails' at the end of the abdomen



GREAT POND SNAIL

Grazes on algae and rotting matter. The largest pond snail. Grows its shell up to 5cm long



POND SKATER

Predator & Scavenger
Glides across surface on long legs. Flies well; rapidly colonises new ponds



MIDGE LARVAE

Feed on algae and decaying matter. Also known as bloodworms due to their bright red coloration