

Glenveagh Nature Education Programme

MODULE FACT SHEET FOR TEACHERS

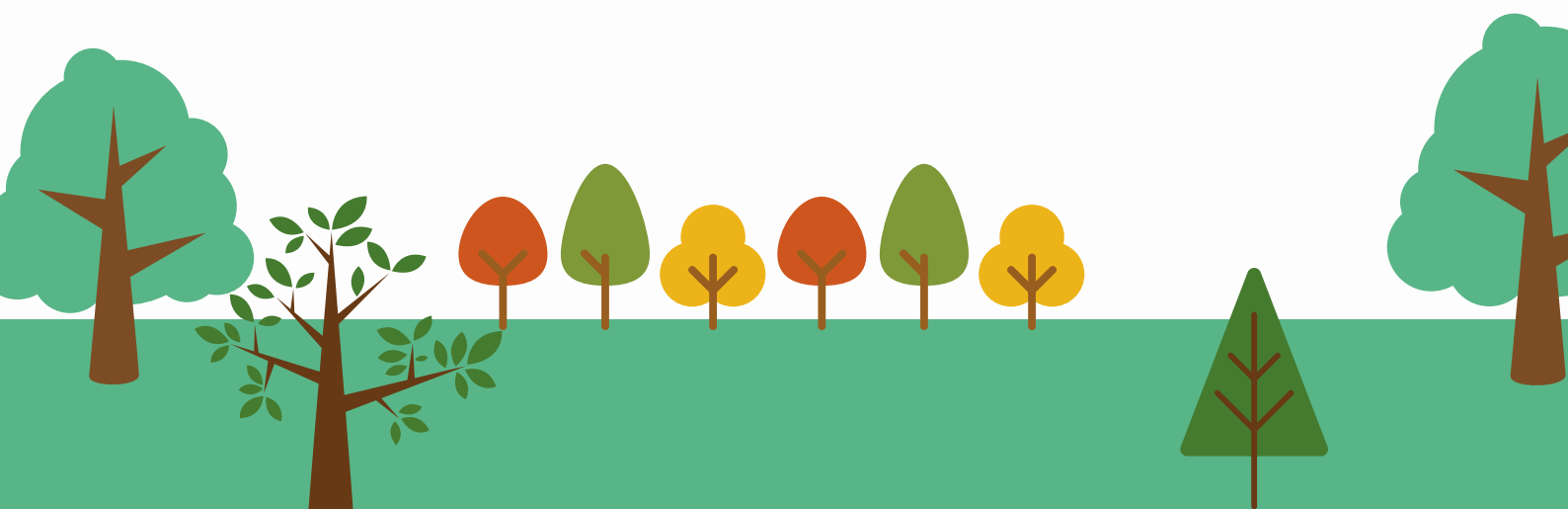
Woodland Discovery Day

WHO IS THIS MODULE IDEAL FOR?

- Your class group are 2nd to 6th Class
- Your class are discovering the world of woodland ecology.
- You would like a broad introduction to Donegal's trees and woodland habitats.

LEARNING OUTCOMES

- Your students will discover the Derrylahan forest of Pines, Oak and Birch as well as areas of transition from shrub to grassland.
- Students will gather an understanding of how nature co-exists in woodlands, how trees interact with the environment and animals around them.
- Develop each students relationship with the outdoors and nature.
- Students will learn how a woodland is structured, from the forest floor to canopy level, why there are layers and what lives in those layers.
- Be able to name the parts of a tree.
- Be able to describe native and non-native trees, their differences and how they live.



Glenveagh Nature Education Programme

MODULE FACT SHEET FOR TEACHERS

Woodland Discovery Day

HOW THE EDUCATION TEAM WILL DELIVER THIS PROGRAMME AND WHAT STUDENTS WILL EXPERIENCE:

- Experienced education guides will take students on a nature walk and exploration through areas of woodland.
- Discover Donegal's native trees by examining bark, leaves ,buds, fruits and flowers.
- Identify food chains and play interactive games to illustrate this.
- Look for woodland specialist plants and flowers using keys and photos.
- Minibeast hunting and bird watching.
- Nature based arts and craft to reflect on learning .

WHAT CAN YOU DO BEFORE YOUR VISIT TO GLENVEAGH?

- Talk about what a woodland is, what might live there and what it looks like.
- Learn some native Donegal trees such as Rowan and Birch
- Learn the 4 layers of the forest - Ground, Field, Shrub and Canopy.
- Show your students what a food chain is and ask them to come up with one for a woodland/forest.
- Find out what trees and forest do for us.



Glenveagh Nature Education Programme

MODULE FACT SHEET FOR TEACHERS

Woodland Discovery Day

SUGGESTED FOLLOW UP ACTIVITIES TO DO AFTER YOUR VISIT:

- Survey all the trees you can find at your school. What season is it from looking at them, what types of trees do you have, what insects and plants live near them.
- Explore the differences between native and non-native trees.
- Start a woodland season table
- Ask each student to bring a leaf in from a tree near their home and to identify them. Record the diversity of trees around the childrens homes.

USEFUL LINKS FOR FURTHER INFORMATION:

- <http://ispynature.com/>
- <http://iwt.ie>
- <http://npws.ie>
- <https://irelandswildlife.com/>
- <https://www.treecouncil.ie/>

