

Glenveagh Nature Education Programme

MODULE FACT SHEET FOR TEACHERS



Signs of Spring



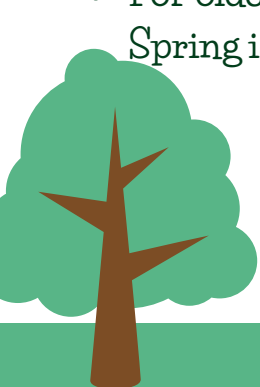
WHO IS THIS MODULE IDEAL FOR?

- Your class wish to visit in February, March or April
- Your group is a younger class group.
- Good for focusing on the seasons and noting the arrival and movement of Spring across Europe.
- This day can be counted towards your DPSM Certificate as part of the Greenwave initiative.
- Your group would like to integrate a bit of maths into your trip with simple tasks and activities.

Note: These are recommendations only - modules are open to all groups.

LEARNING OUTCOMES

- Develop an understanding of what Spring is and how to look for signs of arrival.
- Explore the park to record the signs of Spring (appropriate for each age group)
- Paying particular attention to three Spring species (which will be decided upon at your visit).
- Encouragement to find other Spring species around the park.
- Take basic scientific measurements including soil and air temperature, wind speed and direction in different areas of the park.
- Time and space to think creatively about Spring and to make arts and crafts reflecting this.
- For older groups, (8yrs & upwards), a more in-depth explanation of why the arrival of Spring is used to measure environmental factors such as climate change.



Glenveagh Nature Education Programme

MODULE FACT SHEET FOR TEACHERS



Signs of Spring

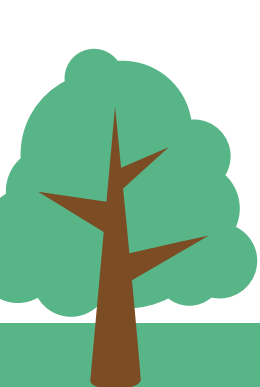


HOW THE EDUCATION TEAM WILL DELIVER THIS PROGRAMME AND WHAT STUDENTS WILL EXPERIENCE:

- Guides will take students on a nature walk through the Park investigating the signs of Spring
- We will discuss what causes spring to happen and its movement into Ireland from the southern climate, what species to look for and why Scientists do this all around the world.
- Hand-on activities such as scientific recording (temperature, wind speed, light intensity).
- Mathematical tasks using results from their scientific recording.
- Arts and craft based activity based on what the students have experienced.

WHAT CAN YOU DO BEFORE YOUR VISIT TO GLENVEAGH?

- Discuss Spring with your students, what do they already know and what are they curious about?
- Cover the map of Ireland and Europe to get your students thinking about migration.
- Discuss why temperature is important in living things and why a change in temperature marks the beginning of Spring.
- Look back at winter - cover what happens to plants and animals before Spring.



Glenveagh Nature Education Programme

MODULE FACT SHEET FOR TEACHERS



Signs of Spring



SUGGESTED FOLLOW UP ACTIVITIES TO DO AFTER YOUR VISIT:

- Ask your students to write up a poem based on Spring.
- Take one species you have looked at in Glenveagh and create a project about it, maybe how it changes from season to season.
- Choose to explore all four seasons as the year progresses in more depth, bringing in topics of climate change, changes in weather patterns, previous year temperatures and any unusual things that may have happened.

USEFUL LINKS FOR MORE INFORMATION

- <https://irelandswildlife.com/>
- <https://www.vincentwildlife.ie/>
- <http://www.noticenature.ie/>
- <https://www.discoverwildlife.com/>
- <https://iwt.ie/>

