

# Glenveagh Nature Education Programme

## MODULE FACT SHEET FOR TEACHERS

# Infants Day

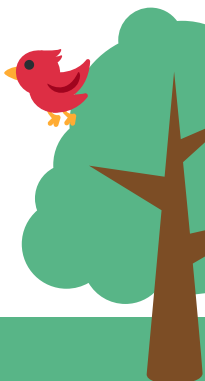
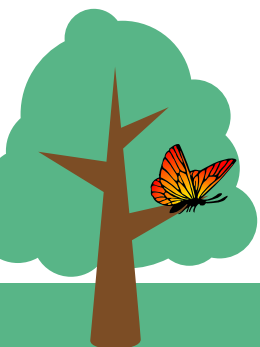
### WHO IS THIS MODULE IDEAL FOR?

- Your students are in aged 4-7 years
- You would like your students to receive a fun introduction to the Natural World and their National Park.
- You want to learn and identify 6 native Irish trees.
- You want to begin connecting young children with their local landscape.

Note: These are recommendations only - modules are open to all groups.

### LEARNING OUTCOMES

- Learn the names of some native trees in Glenveagh by leaf identification.
- Have the space and time to identify, sort and match items including leaves, that students will find on their guided nature walk.
- Students will get the opportunity to gain a basic understanding of the seasons and how trees play their role in each of them.
- Observe, talk, describe and make arts and crafts reflecting the days activities.
- To be supported in their imagination and creativity to make a picture of their favourite leaf or tree to take home, labelled with the name as a way of reflecting on their learning.
- Space and time to begin developing a relationship with nature and living things.



# Glenveagh Nature Education Programme

## MODULE FACT SHEET FOR TEACHERS

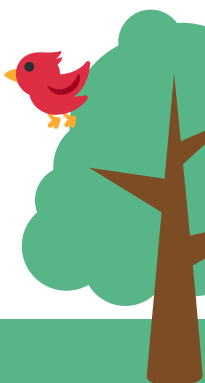
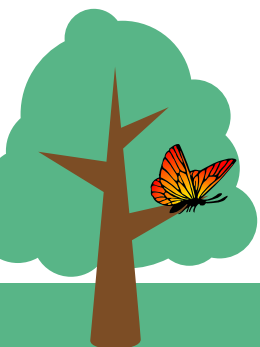
### Infants Day

#### **HOW THE EDUCATION TEAM WILL DELIVER THIS PROGRAMME AND WHAT STUDENTS WILL EXPERIENCE:**

- Guided walk along our nature trail with hands on activities along the way, using all our senses.
- Students will be asked questions and encouraged to think about the nature around them, colours, shapes and numbers in living things.
- Opportunities to talk and share, describing what they see.
- Forage and collect natural items (weather dependent)
- Have the chance to create arts and crafts with natural items and come up with ideas for creative play.
- Reflective closure - each child will be asked about their favourite part of the day.

#### **WHAT CAN YOU DO BEFORE YOUR VISIT TO GLENVEAGH?**

- Take your students on a walk around their school and see what leaves you can find. Bring them to Glenveagh and see if we have the same ones!
- Look at the shapes and sizes of trees with children. Get them to act out these shapes with their bodies.
- Read stories to the class about forests, trees and animals that rely on them.
- Ask the children to talk about or draw about a special tree they know.
- Learn about animals that live in or around trees.



# Glenveagh Nature Education Programme

## MODULE FACT SHEET FOR TEACHERS

# Infants Day

### **SUGGESTED FOLLOW UP ACTIVITIES TO DO AFTER YOUR VISIT:**

- Make a giant collage on the wall with leaf shapes that the children have made.
- Plant a tree at school and watch it grow.
- Try to find out the names of the trees you have nearby.
- Get the children to find out about trees they have at home and talk about them in school.
- Introduce the concept of trees as resources for us and animals in a simple way - for example, explain that we need trees because..... And animals like the birds rely on trees for..... Ask the children to bring in something from home that is made from wood. Watch which birds use the trees near the school.
- Start a nature table, bring in leaves, nuts , seeds and catkins and start with a tree theme.

### **USEFUL LINKS FOR MORE INFORMATION**

- <http://www.noticenature.ie>
- <https://www.field-studies-council.org/biodiversity/tree-identification/>
- <https://www.treecouncil.ie/>

