

# Glenveagh Nature Education Programme

## MODULE FACT SHEET FOR TEACHERS



# General Nature Explorer

### WHO IS THIS MODULE IDEAL FOR?

- Your class group are 1st to 6th Class
- It's your class's first visit to Glenveagh National Park
- Your class would like a broad introduction to Ireland's nature and Glenveagh National Park
- Your class would like a to cover native trees, plants, mammals, birds and environmental interactions on a general basis.

### LEARNING OUTCOMES:

- A hands on, child-led exploration of woodland, grassland, bog and freshwater environments .
- Seeing first hand how nature co-exists in a National Park and investigating the relationships between local flora and fauna
- Discovering food chains, animal and plants dependence on one another and how they survive in today's climate crisis.
- Develop and encourage a positive relationship with nature and the outdoors and harness a respect for all living things.



# Glenveagh Nature Education Programme

## MODULE FACT SHEET FOR TEACHERS



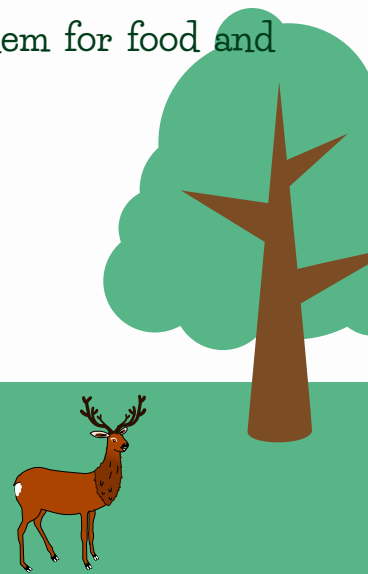
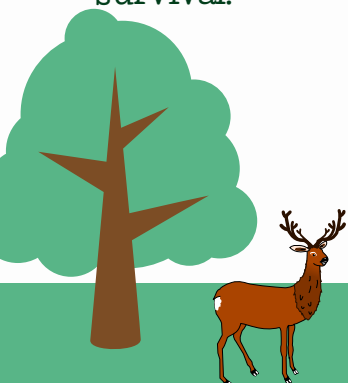
# General Nature Explorer

### HOW THE EDUCATION TEAM WILL DELIVER THIS PROGRAMME AND WHAT STUDENTS WILL EXPERIENCE:

- Experienced education guides will take students on a nature walk and exploration through diverse habitats.
- Questions and challenges will be set to students to encourage them to think about habitats and biodiversity
- Discover animal tracks, trails and foods
- Hands on activities based around native Donegal trees, their importance and history.
- Open discussion between guides, teachers and students about what they have learned and seen.
- Nature art and craft designed to draw on the days learning and/or the season.

### WHAT CAN YOU DO BEFORE YOUR VISIT TO GLENVEAGH?

- Have a class discussion on biodiversity, what students think it means and how important it is.
- Discover what types of habitats Ireland has and some of the birds, plants and animals you could find there.
- Learn what a National Park is and where they are in Ireland.
- Choose 3 native trees to learn about, what shapes are the leaves and what colour the bark on the tree is.
- Show your students a simple food chain.
- Explore the role of plants in nature and what animals may use them for food and survival.



# Glenveagh Nature Education Programme

## MODULE FACT SHEET FOR TEACHERS



# General Nature Explorer

### WONDERING WHAT TO DO AFTER YOUR VISIT?

- Why not discover what types of habitats are in your school and/or close to the school? Try conduct a survey of the animals/plants/trees that you find there.
- Start a nature table - this can change with the seasons to focus on what flowers at certain times of the year.
- After your visit, ask every student to bring in a leaf from a tree and identify them. Record all the different types of trees found by your students.
- Conduct a minibeast hunt!
- Build a bird box or a bee box.

### USEFUL LINKS FOR MORE INFORMATION

- <https://irelandswildlife.com/>
- <https://www.vincentwildlife.ie/>
- <http://www.noticenature.ie/>
- <https://www.discoverwildlife.com/>
- <https://iwt.ie/>

