

Glenveagh Nature Education Programme

Module Fact Sheet for Teachers:

Woodland Explorer

Book this module if:

- Your children are in 2nd to 6th class.
 - Your class are studying woodland ecology.
 - You want a broad introduction to Donegal's trees and woodland habitats.
- (These are recommendations only - modules are open to all groups)

Learning Outcomes: what we hope the children in your class will gain from the module:

- A hands on child led exploration of Glenveagh's woodlands, including Pine forest and Oak/Birch forest.
- Understanding of how nature co-exists and the relationships between the local flora and fauna that use our woodlands.
- Developing the child's relationship with nature, the outdoors and living things.
- Knowledge of the structure of woodlands, the 4 layers of the forest and what lives in them.
- The ability to name parts of a tree.
- The ability to describe the difference between native and non native trees.

Methods of teaching and activities: what children will experience:

- Nature walk and exploration.
- Learning some of Donegal's native trees by investigating leaves, bark, buds, fruits and seeds.
- Discussing food chains in woodlands and interactive games to illustrate this.
- Identifying and exploring the role of some woodland specialist plants and flowers using keys and photos.
- Minibeast hunting and bird watching.
- Nature based art and craft to reflect on learning.

Suggested preparation activities to do in school:

- Discuss what a woodland habitat is.
- Learn some native trees.
- Learn the 4 layers of a forest - ground - field - shrub - canopy.
- Cover food chains in the forest - get the children to come up with as many connections as possible.
- Who lives in a forest? Use books and the internet to find out answers to this.
- What do trees and forests do for us?

Suggested follow up activities to do after your visit:

- Carry out a survey of the trees around or near the school. Who lives near them, what plants and insects do they support.
- Explore the difference between native trees and non-native trees.
- Start a nature table.
- Ask every child to bring in a leaf from a tree and identify them. Record the diversity of trees around the children's homes.

Useful links for further information:

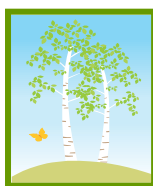
<http://www.noticenature.ie/>

<http://www.treecouncil.ie/>

<http://www.crann.ie/>

<http://www.npws.ie/>

<http://www.nativewoodlandtrust.ie/en/learn/irish-trees>



Nature Education Programme
Glenveagh National Park, Churchill, Donegal
Tel: 00353 (0) 761 002691 / 3
E-mail: glenveagh-education@ahg.gov.ie