



Glenveagh Nature Education Programme

Module Fact Sheet for Teachers: Bog Studies

Book this module if:

- Your children are in 2nd to 6th class.
- Your class are studying bog ecology
- You want a broad introduction to Ireland's blanket bog habitat.
- You are planning to visit us in April, May or June

(These are recommendations only - modules are open to all groups)

Learning Outcomes: what we hope the children in your class will gain from the module:

- A hands on child led exploration of the blanket bog of Glenveagh.
- Knowledge of the flora and fauna of bogland habitat, relevant to their age group.
- Understanding of how bogs are formed and the two main types in Ireland
- Learning the role of bogs as an ecoservice
- Facts about threats to Bogs
- Encouragement to develop a relationship with nature, the outdoors and living things.

Methods of teaching and activities: what children will experience:

- Nature walk and exploration with discussion.
- Questions and challenges encouraging children to think about bog habitat, the plants and animals that live there.
- Exploring the role of moss through hands on investigation.
- Identifying bog minibeasts and plants using keys and photo charts.
- Nature based art with a bog theme to reflect and end the day.

Suggested preparation activities to do in school:

- Identify what flora and fauna live in the bog.
- Learn how different the bog is compared to gardens or agricultural land.
- Learn how bogs are formed - this will link well with history.
- Consider what do bogs do for us?

Suggested follow up activities to do after your visit:

- Design your own bog with all the appropriate layers in 3D from recycled materials.
- Create posters of all the different creatures that live in the bog.
- Explore who lived in the bogs in the past, what remains have been preserved by bogs and how pollen records from bogs help us map out the natural history of Ireland.

Useful links for further information:

http://www.irishbogrestorationproject.ie/facts_for_children.html

<http://www.npws.ie/protectedsites/specialareasofconservationsac/>

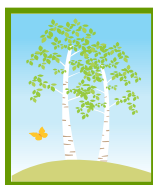
<http://www.ipcc.ie/>

<http://www.noticenature.ie/>

<http://www.ispynature.com/>

<http://www.biology.ie/>

<http://www.npws.ie/>



Nature Education Programme
Glenveagh National Park, Churchill, Donegal
Tel: 00353 (0) 761 002691/3
E-mail: glenveagh-education@ahg.gov.ie